



# OUR AREAS OF INTERVENTION

1



## INTRODUCTION

- Mahila Samakhya is a programme of the Government of India's Ministry of Human Resource Development, department of school education and literacy.
- Jharkhand Mahila Samakhya Society (JMSS) is an autonomous society, registered under society registration act 1860 to implement the national Mahila Samakhya (MS) programme as envisaged in the national policy of education 1986.
- Mahila Samakhya programme was initiated in Jharkhand in 1992 under Bihar Education Project during undivided Bihar; It continued as usual under Jharkhand education project council when Jharkhand became a new separate State in 2000.
- In September 2006 JMSS got registered and took over the all responsibilities of Mahila Samakhya activities from June 2007.

2



## OUR COVERAGE

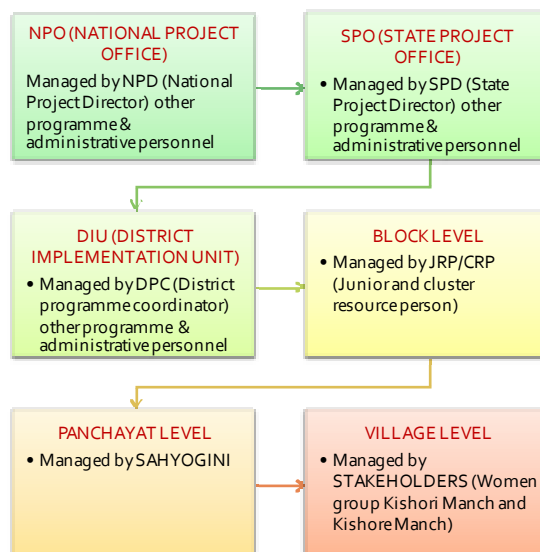
Coverage			
PARTICULARS	TOTAL	COVERED	%
Districts	24	11	45.83%
Blocks	211	71	33.64%
Villages	32620	4098	12.56%



3



## PROGRAMME STRUCTURE



4



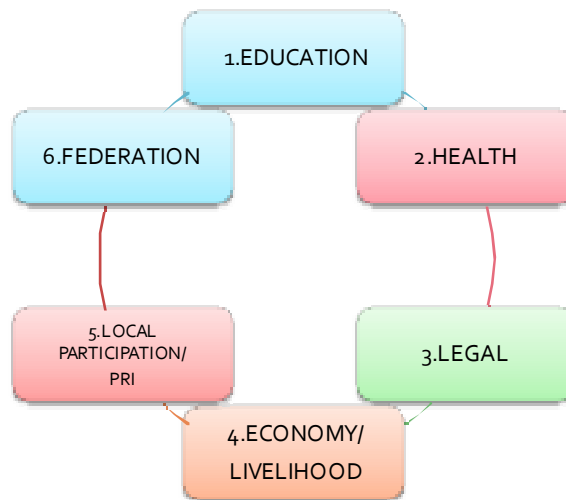
## OUR KEY STAKEHOLDERS

WOMEN GROUP	KISHORI MANCH	KISHOREMANCH
Group of village women.	Village level forum of adolescent girls.	Village level forum of adolescent boys.
Very different from other SHG's	Consisting of school/college going and other girls.	Consisting of school, college going and other boys.
Work for gender equity.	Ex MSK girls are also members.	Share their experiences.
Works on education health, legal, economy and PRI issues.	Share their experiences.	Raise voice against social evils.
Raise local issues too.	Raise voice against social evils.	Work on local issues and issues of other boys.
Work as pressure group.	Work on local issues.	Bridge gender gap.
Solve women related legal issues.	Fulfill their hobbies.	Work as change agents.
Play supportive role in MS programme implementation.	Work as change agents.	Work in collaboration with Kishori Manch.
	Work parallel with women group.	

5



## OUR AREAS OF INTERVENTION



6



# EDUCATION

7



## ACTIVITIES UNDER EDUCATIONAL

1. MAHILA SHIKSHAN KENDRA

2. JAGJAGI KENDRA

5. CAMP SCHOOL

4. PALNAGHAR

3. LITERACY CAMP

8



## MAHILA SHIKSHAN KENDRA

11 months residential training for girls and women aged between 15 to 35.

Run at district level.

Illiterate, Widows, the poor, deserted, Handicap, drop out, never gone to school are given priority.

Lessons up to class 5<sup>th</sup> are taught in 11 months.

After the session they are mainstreamed in KGBV and other formal schools.

Some of them get self employed according to their capacity and interest.

Life skill education, vocational training, computer training, gender training are the parts of MSK curriculum.

9



## JAGJAGI KENDRA

Village level Literacy centers.

It is run for around one to two years.

Opened in the areas of lowest women's literacy rate on the demand of mahila samooch.

For all deprived women who could not get literate from Samooch as well as from outside.

Centers run at village level at the convenient time and place of women.

The teacher (Saheli) is also one of the educated women most probably from the same village.

Centers are specially for working women.

Centers are fully managed by women groups.

Special Jagjagi curriculum to teach life skill education, along with reading and writing skill.

10



## CAMP SCHOOL

Operated at block level.

For deprived girls aged between 9 to 14.

Rescued as child laborers are also enrolled.

It is a nine months residential training.

After the training they are mainstreamed in formal schools.

11



## PALNAGHAR

Operated at village level.

For the children aged between 1 to 3.

For the benefit of parents working in unorganized sectors such as manual laborers, domestic workers, vegetable sellers, agricultural laborers, farmers etc.

The parents leave their 1 to 3 years old children in the centre before they go for work and pick them up when they come back.

In Palna Ghar all the facilities for study, amusement, skill development are available.

It focuses on the behavior change on health, hygiene and the child act as a change agent in their house as well.

Children are taught all preparatory lessons to join school.

12



## LITERACY CAMP

Organized for almost 5 to 15 days at village level.

Participated by Around 50 to 60 women.

For Samooch and other women of the village.

To enable them to write their names, address etc.

They are made aware of govt. schemes, banking procedure, various service providers & their functions, different offices at block & district level.

They are taught their role in the society, gender equity, their role in the local administration etc.

Camps are organized at regular interval for the same participants up to at least 4 times.

Almost 4 camps with the same participants.

33



## HEALTH

34



## ACTIVITIES UNDER HEALTH



35



### Health Camp

- organized at village level for the MS women.
- Prevention and cure of all the common diseases are discussed
- given information about different health schemes by government and non government organizations.
- Civil surgeon of the district government health department supports in deputing medical officers and ANMs for the camp

### Herbal Medication

- Herbal Medication is the cost effective, easily available and most popular traditional practices by our women
- MS women learnt the scientific way of herbal medication through training
- The trained women are successfully curing many chronic diseases
- A herbal clinic is also running in State Project Office, where trained women come and give free consultation to the suffering people.

### BCC of best practice in health and hygiene under TSC

- Under the TSC programme MS women got trained in health and hygiene
- They are working in their respective villages to bring about behavioral changes for best practices through BCC activities.
- Women are made aware of seven key components of health and hygiene.

36



### **Health committee formation**

- Health committees are formed at village level by our stakeholders.
- Committee members are responsible for spreading awareness about health and hygiene, ensuring quality of health facilities in the village.
- They ascertain accessibilities of villagers to all the health facilities

### **Campaign on Menstrual hygiene**

- Menstruation has always been neglected in the villages.
- Girls and women are the worst sufferers due to their ignorance on hygienic requirement during periods.
- Mahila Samakhya is making women aware of personal hygiene and cleanliness during the menstruation period.
- The economic conditions of the rural women do not allow them to buy and use sanitary napkins.
- MS is making all efforts to look at this grimy situation seriously and preparing them to use the sanitary napkins made at local level by their own sisters.
- JMSS has set up a production centre for sanitary napkins in Ranchi with the support of UNICEF, Jharkhand.

17



### **Health awareness campaigns**

- Awareness campaign consists of various health camps, trainings, Nukkad Natak, Slogan writing, road show, celebration of hand washing day and workshops etc at different levels.
- Throughout the campaign rural community has been imparted knowledge on various seasonal and chronic diseases. They are also made aware of prevention and remedies for various diseases.

### **Access to Health Services**

- Mahila Samakhya tries to ensure that every woman should take the advantages of health programme by government and non government departments.
- They are made aware of what health facilities are available for them and how to get.

18



# LEGAL

39



## ACTIVITIES UNDER LEGAL

- Nari Adalat
- Awareness Campaign
- Gender sensitization
- Hearing of cases by Samooh
- Formation of legal committee
- Legal Camp
- Access to legal services

20



### **Nari Adalat**

- It is an alternative to the traditional judicial system
- generally managed by federation
- To facilitate the women victimized by gender discrimination
- MS initiated Nari Adalats are very practical, less expensive and accessible to every women who wishes to take the support.
- It is neither expensive nor complicated
- These Nari Adalats are operated completely by MS women themselves.

### **Awareness Campaign**

- Through awareness campaign we aim at making the women aware of women rights, women related laws and empower them to protest against gender discrimination
- It makes them understand their rights in family and society and they can gradually participate in decision making processes and become capable to fight injustice and superstitions prevailed in the family and society.

### **Gender sensitization**

- The specific nature and degree of gender differences vary from one society to another and typically in favour of men.
- MS is making efforts to disseminate the balanced message defining the role and power so that both of them can get equal opportunity in every sphere of life.
- Taking a longer and sustainable point of view, gender sensitization programs have been organized in terms of workshop, training, seminar and General Council Meeting (Aam Sabha) for women groups, community, Kishori Manch, MSK and MS staff

21



### **Hearing of cases by Samooh**

- MS formed women groups takes gender based cases to root out gender discrimination from the society.
- Old women groups have widely spread reputation as pressure groups and people respect their job of social reformation. Victimized women come to the Samooh with their complaints against the wrong doers and the cases are registered by the Samooh members and solved in the presence of both sides.

### **Formation of legal committee**

- Legal committees are formed at village level to work against domestic violence, social evils, and gender discrimination against women. Committees are formed by women groups. They hold regular meetings and discuss gender based local issues and awareness of gender equity among women.

### **Legal Camp**

- Legal camps are organized at village block and district level to aware women of their rights, their upright place in the society, their role in local administration and equal rights in every sphere of life. These camps play a vital role in bringing about gender equality in a very uncontroversial manner.

### **Access to legal services**

- MS targets to ensure women not to be silent sufferers any more as there is great support from many a departments to avail them righteous place in the society but for want of proper knowledge and access to these services women have to suffer from injustice against them thus we are trying to make sure that every woman should be aware of their rights and raise voice against gender discrimination and win their reverent space in the society.

22



## ECONOMIC/LIVELIHOOD

23



## IG ACTIVITIES BY STAKEHOLDERS

- Agriculture & Animal husbandry
- Food products
- Other consumable & non-consumable products
- Non-consumable products
- IG through TSC
- Saving & loaning
- Group business
- Herbal products
- Access to government Schemes

24



## Women groups engaged in IGA

Categories	Activities	SamooH engaged
▪ Agriculture & Animal husbandry	Poultry, fishery, cooperative cultivation, vegetable cultivation, herbal garden, piggery, goatery, flower garden, mushroom cultivation, cultivation on lease etc	168
▪ Other consumable and non consumable products	Soap, detergent powder, candle, stitching, knitting, Furniture, brick, jewelry, lac bangles, bamboo craft, terracotta etc.	83
▪ IG through TSC	Toilet construction, hand pump repairing, auto driving, production of sanitary napkin, vermin-composting, masonry, water testing etc	91
▪ Saving & loaning	Groups do saving and loaning for the purposes of Treatment, education, business, agriculture, marriage, or any other emergency work	2792
▪ Group business	Tent house, PDS, grain bank, general store, business of Mahua, vegetables, paddy etc.	187
▪ Herbal products	Women groups are making the herbal medicines for gastric, cough and cold, skin disease, paralysis, fever, anemia, infertility, debility.	13
▪ Access to government Schemes	Women groups take the contract of constructing pond, well, bridge, and check dam, Panchayat building etc under NREGA and take loans under SJGSY to start group business. This year strong SmooHs got Rs. 10000/-each from minister's quota.	178

25

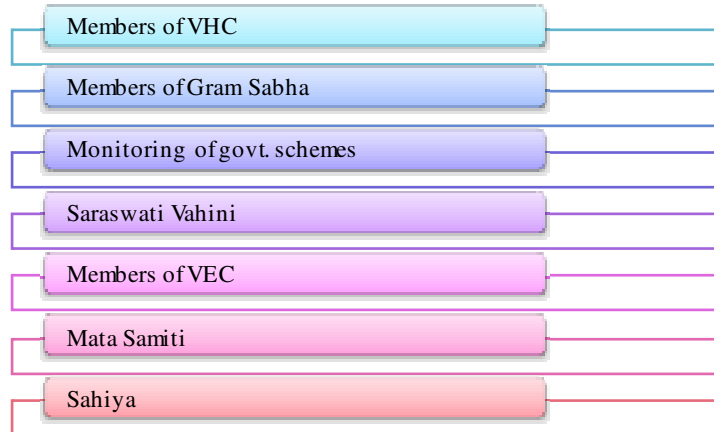


## Local Participation /Panchayati Raj

26



## MS WOMEN IN LOCAL PARTICIPATION



27



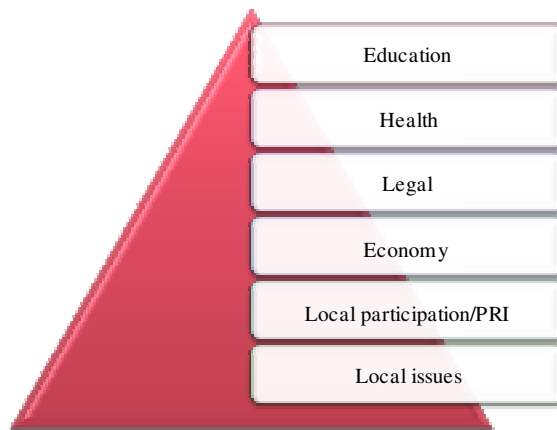
## FEDERATION

- ❖ Federations are registered autonomous bodies having their own self structure, rules & regulation and recognize themselves as strong groups.
- ❖ Once the group reaches at a level of development and it is felt that they can take their decisions on their own and can solve problems smoothly, Mahila Samakhyas starts withdrawing from that block in a phased manner and finally gives the entire responsibility to the Federation.
- ❖ Mahila Samakhyas provides every required technical support to the federation as per their need and demand.

28



## PRIORITY AREAS OF FEDERATION



29



## ACTIVITIES BY FEDERATION

Issue	Activities
Education	<ul style="list-style-type: none"> <li>• Camp school</li> <li>• Palna Ghar</li> <li>• Jagjagi centers</li> <li>• Enrollment and retention of students in educational institutions</li> <li>• Literacy camp</li> <li>• Monitoring of educational institutions</li> <li>• Monitoring of Angan Wadi centers</li> <li>• Access to educational services</li> <li>• Education committee formation</li> </ul>
Health	<ul style="list-style-type: none"> <li>• Adolescent health</li> <li>• BCC activities for best practices in health</li> <li>• Herbal medication</li> <li>• Training on health to Samooch women</li> <li>• Workshop on health</li> <li>• Health committee formation</li> <li>• Access to health services</li> </ul>
Legal	<ul style="list-style-type: none"> <li>• Nari Adalat</li> <li>• Legal camps</li> <li>• Legal awareness among village women</li> <li>• Access to legal services</li> <li>• Workshop on legal issues</li> <li>• Legal committee formation</li> </ul>

30



<b>Economy</b>	<ul style="list-style-type: none"> <li>• Toilet construction</li> <li>• Hand pump repairing</li> <li>• Vermi-composting</li> <li>• Government schemes</li> <li>• Production of herbal medicines</li> <li>• Other consumable items</li> <li>• Vocational training to Samooh</li> <li>• Economy committee formation</li> </ul>
<b>Local participation</b>	<ul style="list-style-type: none"> <li>• Training on PRI</li> <li>• Workshop</li> <li>• Ensuring the place of women in local participation</li> <li>• Preparing women for Panchayat election</li> <li>• PRI committee formation</li> </ul>
<b>Local issues</b>	<ul style="list-style-type: none"> <li>• Running campaign on local issues like domestic violence, child marriage, trafficking, migration, economic empowerment, malaria in malaria prone areas etc according to the prevalence of issues in the locality.</li> </ul>

31



## CONVERGENCE

<u>Department/organisation</u>	<u>Issues working on</u>
Child in need institute (CINI)	Adolescent health, village resource centre(DIC)
Drinking water and sanitation department (DWSD)	TSC
Public health and engineering department (PHED)	Hand pump repairing
United nation international children education fund (UNICEF)	Technical support for TSC programme
Jharkhand state AIDS control society (JSACS)	HIV AIDS
Human rights law network (HRLN)	Trafficking(training)
Directorate of tribal welfare	Unused building for MSK (Proposal submitted) Mobilization of facilities (Proposal to be submitted)

32